

# Liberty Administrator/32

*Enhanced mapping of MultiValue data structures to ODBC with convenience, performance, and a Windows-consistent interface.*

## **A** dministrator/32 at a Glance

*The Liberty Administrator/32 is the second-generation ODBC administration tool from Liberty Integration Software: the premier tool for ODBC-enabling new and existing MultiValue applications.*

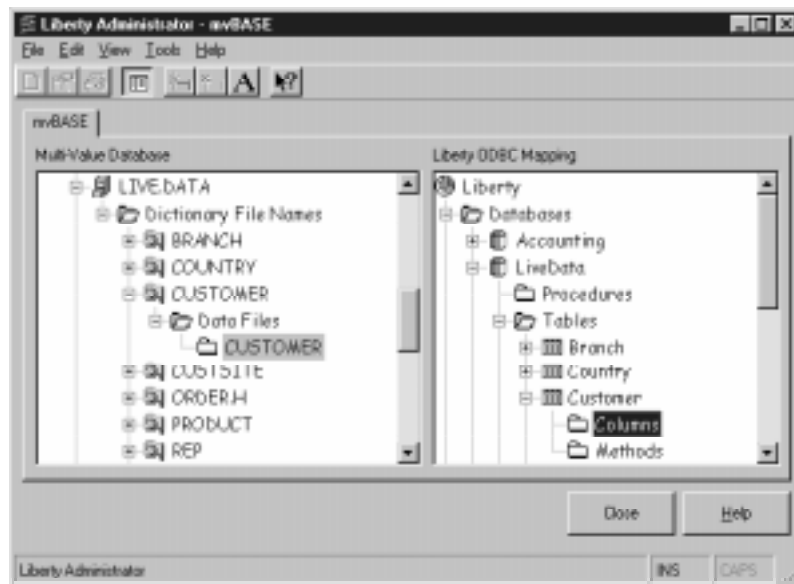
*Liberty Administrator/32, dramatically reduces the time and cost of publishing databases for use in data warehousing and decision support applications. For maximum performance and accuracy, both the server and client components of The Liberty Administrator/32 have been completely re-engineered.*

*Through its Windows Explorer-like interface, The Liberty Administrator/32 provides logical MultiValue and Relational views in parallel windows. Users can drag MultiValue accounts and files from the left pane into the databases, and tables of the right pane.*

*This true 32-bit application includes complete context sensitive help and instructional "cue cards" to maximize productivity. The smart interface learns user preferences, taking advantage of new toolbars and interface flexibility.*

*In addition to presenting ample information about*

## Liberty Administrator/32



MultiValue files and relational tables, The Liberty Administrator/32 provides improved table validation and stored procedure maintenance. The new Liberty Mapping Wizard greatly speeds administrative functions. This intuitive interface quickly leads the user through mapping, data cleansing, and analysis.

### INTUITIVE EFFICIENCY

VARs and IT departments can enhance the value of MultiValue data stores by providing access to ODBC-compliant analysis tools such as Microsoft Excel and Access, Cognos' Impromptu and Powerplay, Crystal Reports, and others. With developer tools like Visual Basic and Web servers from Netscape and Microsoft, custom-tailored analytical applications are within easy reach of developers who need to extend the life and utility of existing systems.

Liberty Administrator/32 accelerates development productivity with its complete toolkit for defining the stored procedures driving

these applications. Liberty Administrator/32 lowers the bar for implementation of ODBC, while it speeds the process of mapping your non-relational (Pick) data to the relational model required by ODBC.

### Enhanced interface

- Add, delete, or modify columns in the definition table through the drag and drop interface.
- Windows 95-like open dialog boxes.
- "Tree" view of MultiValue database structure
- Extensive toolbars for tuning views and features.
- Convenient display of all dictionary attributes, including correlatives and conversions.
- Information display order changeable with click and drag.
- Configurable combined column definition and dictionary listing screen.
- Properties dialog boxes provide complete information about tables, databases, and stored procedures.

### Help features

- Comprehensive context-sensitive help for all screens.
- Instructional "cue cards" explain common tasks.
- Smart interface learns how you like to work:
  - Fonts
  - Dialog box size and position
  - Frequently used data sources
  - Editable grid column position and size

### Intuitive power

- Drag-and-drop addition of columns based on dictionary correlative.
- Customize your mapping with SELECT, UPDATE, INSERT, and DELETE methods, as required.
- Automatic parsing of dictionary definitions to accurately map data.
- Nearly instant ODBC column definition.
- Intelligent caching boosts speed.

### Validation and maintenance

- Simultaneous validation report review and column definition editing
- Combined table and stored procedure management
- Tab view display, for access to input and result parameters.
- Parameter entry with limited row return for validity testing.
- Stored procedure BASIC program editor with syntax color coding.
- Multiple document editing.
- Save, compile, and catalog MultiValue BASIC programs from toolbar.
- Complete compiler error reporting in Windows.
- BASIC code listing to Windows printers, with or without line numbers.

### LIBERTY MAPPING WIZARD

The Liberty Mapping Wizard encapsulates the vast body of expertise accumulated assisting

more than 400 Liberty customer implementations of ODBC with their MultiValue databases. Further extending the ease and speed with which Liberty Administrator/32 users can map their data, Liberty Mapping Wizard is based on the proven Windows 95 wizard metaphor.

This tool improves the accuracy and speed of mapping, data cleansing, and analysis. Why spend hours sifting through data to find needed attributes and association? Liberty Mapping Wizard researches the database, then asks the pertinent questions so you will:

- Set tolerance for inconsistent data.
- Establish data cleansing parameters.
- Decide when to treat numeric fields as strings, integers, decimals.
- Optimize treatment of multivalued and subvalues.

Liberty Mapping Wizard can analyze your database and automate up to 90 percent of the preparation of data warehouse preparation.

### About Liberty

Liberty Integration Software, Inc., a subsidiary of General Automation, Inc., develops software products that let MultiValue compliant (Pick) databases work with popular client environments. Liberty, which has become synonymous with Open Database Connectivity (ODBC), offers a full suite of enterprise connectivity products and services.

#### For more information, contact Liberty

Phone: (604) 682-8293

Toll Free: (800) 898-6322

Fax (604) 682-8499

E-mail: [info@libertyODBC.com](mailto:info@libertyODBC.com)

Web: [www.libertyODBC.com](http://www.libertyODBC.com)



Liberty Integration Software, Inc. 1122 Mainland Street, Suite 230 Vancouver, BC Canada V6B 5L1

©1998 Liberty Integration Software, Inc. All rights reserved.

Liberty Integration Software, Inc. is a wholly owned subsidiary of General Automation, Inc.

Liberty Integration Software, Inc. acknowledges the rights of proprietors of trademarks mentioned herein.

©1998 Liberty Integration Software, Inc. April 1998. All rights reserved. Liberty Integration has the right to modify product specifications at any time without notice. Specifications and descriptions may not always be appropriate for determining your specific needs. Certain features and capabilities may be provided by products obtained by the user from sources other than Liberty Integration. The performance of Liberty Integration products may be affected by application software program, the user's operation of the system, equipment obtained from other manufacturers, suppliers or other variables. Printed in the USA. CP 4/98-2K